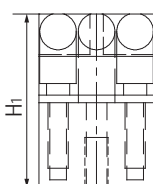
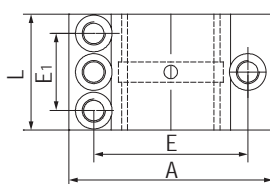
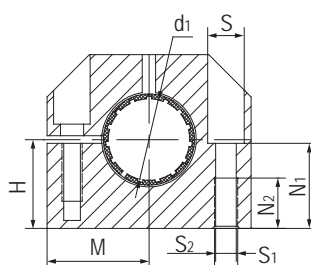


LIN-12BE 可调节直线滑块轴承 Adjustable linear pillow blocks



- 封闭式、短型可调节枕块设计
- 装配LIN-12滑动膜
- 阳极氧化铝合金适配器
- 螺栓固定
- 免维护、低噪音
- 适用于污垢或灰尘环境
- 使用温度 -50°C/+90°C
- Closed and adjustable short block design
- Assembled LIN-12 liners
- Anodized aluminum adapter
- Secured by bolts
- Maintenance-free and low noise
- Resistance to dirt and dust
- Operation temperature -50°C/+90°C

标准规格 Standard specifications



产品编码 Part No.:

LIN-12BE-12

轴承内径 Inner diameter

 可调节设计滑块
Alignment design block

 LIN-12 标准滑动膜
Standard liners LIN-12

轴 Shaft: h6-h9

产品编码 Part No.	d ₁ [mm]	公差 Tolerance [mm]	H +0.01 -0.014 [mm]	H ₁ [mm]	A [mm]	M [mm]	E ± 0.15 [mm]	E ₁ ± 0.15 [mm]	S [mm]	S ₁ [mm]	S ₂ [mm]	N ₁ [mm]	N ₂ [mm]	L [mm]
LIN-12BE-12	12	X	17	33	40	20	29	18	8	4.3	M5	16	11	28
LIN-12BE-16	16	X	19	38	45	22.5	34	19	8	4.3	M5	18	11	30
LIN-12BE-20	20	X	23	45	53	26.5	40	20	9.5	5.3	M6	22	13	30
LIN-12BE-25	25	X	27	54	62	31	48	25.5	11	6.6	M8	26	18	40
LIN-12BE-30	30	X	30	60	67	33.5	53	30.5	11	6.6	M8	29	18	50
LIN-12BE-40	40	X	39	76	87	43.5	69	36	15	8.4	M10	38	22	60
LIN-12BE-50	50	X	47	92	103	51.5	82	44	18	10.5	M12	46	26	70

X=可调节adjustable

产品编码 Part No.	轴径 Shaft [mm]	F max. [N] 最大动载荷 Dynamic Load P=5MPa	F max. [N] 最大静载荷 Static Load P=35MPa	重量 Weight [g]
LIN-12BE-12	12	840	5880	78
LIN-12BE-16	16	1200	8400	106
LIN-12BE-20	20	1500	10500	132
LIN-12BE-25	25	2500	17500	253
LIN-12BE-30	30	3750	26250	374
LIN-12BE-40	40	6000	42000	713
LIN-12BE-50	50	8750	61250	1168